



## SAVE FERTILISER – USE SLURRY BOOST!

By Colm Nolan – (B. Agr. Sc.) – Ph: 086 4410762

With cattle housing drawing closer it is now time to consider the use of slurry inoculants. The high price of chemical fertiliser has made many farmers look closer at maximising the benefits of their slurry. We think our **Slurry Boost** inoculant has proven to be a tremendous asset to asset to farmers.

### COST BENEFIT

**Slurry Boost is extremely cost-efficient.** A 1kg tub treats **100,000 Gallons** of slurry and costs approximately €200. This equates to a treatment cost of €5 per 2,500 gallons.

Farmers using this product tell us that they can typically reduce the N application on their first cut silage by ½ a bag per acre (13-15 units of N/acre) when they use 2,500 gallons of Slurry Boost treated slurry instead of non-treated slurry. At current fertiliser prices, this means a saving of approximately €15 per acre- that's a potential 3:1 return on investment - based on N savings alone.

### OTHER BENEFITS

#### 1. Liquifies the Slurry and Decreases Agitation Time

- Most farmers report a 50% reduction in agitation time depending on tank size.
- You get far less pipe blockages in low emission slurry spreading systems.
- This combination of highly liquified slurry with trailing shoe spreading systems enables quicker turnout on slurry treated paddocks while still maintaining good graze outs.
- It reduces the crust formation in lagoons and slurry towers.
- Less likely to need to add water at agitation time – saving time, money and maintaining slurry quality.

#### 2. Healthier Slurry, Healthier Soil

- Slurry Boost is an inoculant which introduces a population of microbes into the slurry that utilise the free ammonia in the slurry and convert it into microbial N.
- This process reduces the toxic ammonia levels in slurry and thereby makes it much healthier for soil. Slurry treated with Slurry Boost becomes a biologically friendly soil conditioner which washes into the soil very quickly, providing a ready meal for the soil microorganisms needed to mineralise soil nutrients.



**TRIED & TESTED INOCULANT**

**1Kg treats 100,000 GALLONS**

**DO YOU NEED MORE FROM YOUR SLURRY?**

# SLURRY BOOST

- Easy Once Off Application
- More Grass with Less Fertiliser
- Decreased Agitation Time
- 3:1 Return on Investment

For more information contact any of our Nugget Stockists  
Tel: 057 9133002 | [www.grennans.ie](http://www.grennans.ie)




## ‘What the Farmers Say’

*‘I used slurry boost for the first time this year. We have a tank that is always difficult to agitate fully. We said we would try it in this tank and found that it agitated fully without drawing water. This saved us an awful lot of time compared to previous years. Based on agitation time alone I recouped the cost of the slurry boost. I also found that there was a reduced smell from the slurry and that there was a better return from the grass where the slurry containing Slurry Boost was applied.’*

*Dave Cummins, Beef Farmer, Screebogue, Carrickboy, Co. Longford*

# GRENNAN'S NOW SOLE DISTRIBUTORS FOR OPTICIDE 200

By *Shane Gonoude* – (B. Agr. Sc.) – Ph: 087 6466707

Opticide 200 is a highly effective, fully approved, cost-effective, broad-spectrum disinfectant/sterilant for general farm use and animal housing areas. It has been available in Ireland for several years and has been much in demand by farmers who have used it in the past. We are delighted to announce that Grennan's have been appointed sole distributors for this product at both retail and wholesale level in Ireland.

Developed by Bayer, Opticide 200 contains a blend of highly effective Glutaraldehyde and Quaternary Ammonium Compounds (Q.A. C'S). This blend of active ingredients ensures Opticide 200 is one of the broadest spectrum and most effective disinfectants/sterilants available to Irish farmers. Unlike many other disinfectants out there, Opticide 200 is effective against all pathogen types including Viruses, Bacteria, Protozoa, Mycoplasma, Fungi and Yeasts.

Available in 5L, 10L and 20L containers from any of our stores. It has multiple uses from routine hygiene in Milking Parlours, Lambing pens, Calving boxes, Stables, etc. to Foot baths, Boot dips, etc. It can also be used a sterilant in terms of disinfecting equipment and is fully approved by DAFM as a disinfectant for the purpose of the Diseases of Animals Act, 1966, including diseases such as Foot and Mouth and Tuberculosis.

Farmers tell us they find it particularly useful against Ringworm. It is being used either as a disinfectant for Ringworm infected housing (at a 2% dilution rate) or alternatively it can be applied directly to the affected animal as a once off 5% (50ml Opticide per 1L water) diluted spray. It can also be used as a control for warts on heifers pre-calving at the same 5% dilution.

It can be administered using a pressure washer, knapsack, watering can, cloth, mop, or fogger. Opticide 200 remains stable and effective for at least one year after dilution with water. For best results using Opticide 200, all surfaces should be thoroughly cleaned beforehand. Recommended dilution rates will vary depending on the specific pathogen being targeted and the specific surface to be treated. It's important to follow the detailed instructions found on the label or on our website.

For more information contact any member of our staff.



## CAN VERSUS UREA FOR 2023

By *Paul Mooney* – (B. Agr. Sc.) – Ph: 086 3532342

Due to the exorbitant prices of gas at present, several CAN producing factories throughout the EU have stopped production. A drop in gas price may see a return to production by these plants, but the question has to be asked, does it make sense to use CAN when it is a similar price per tonne to Urea? CAN is currently 40% dearer per unit N than Urea. While Urea has obvious disadvantages vs CAN in terms of volatilization losses and spreading difficulties, it will have to be given some serious thought.

With the right machinery, favourable weather and careful spreading, Urea can be used in almost every situation that you would consider using CAN. Urea granules have only 80% the bulk density of CAN, so in wide tramlines, it will require changing vanes & reducing spinner speed on spreaders. The use of Urea in compounds has never been that popular due to difficulties with product going hard and the risk of P and K granules separating from the Urea granules especially when spreading widths are north of 20 meters.

So if you think Urea will be a significant component of your fertiliser plans for 2023, we would urge you to use the next

few weeks/months to talk with your spreader dealer and get the necessary adjustments made on your spreader. It is also vital to get yourself fully informed as regards the correct spinner speed and settings for Urea based compounds. Careful tray testing from the outset of the spreading season is also an absolute must. We fully intend to have our bulk spreaders set up to apply Urea based compounds at bout widths up to 24 meters.



# STEERING PROTEIN REQUIREMENTS FOR BEEF CATTLE

By Brian Delaney – (B. Agr. Sc.) – Ph: 086 0449592

In beef cattle diets, protein is a vital component for all reproductive, digestive, and immune systems to function properly. It is also vital for the proper development and function of all vital organs.

When calculating protein levels for beef cattle, crude protein figures can be used as a guide, but PDI values (Rumen available protein) must be adequate and balanced if you want to be efficient in supplying the correct level of protein.

Typically, younger animals of continental breeds particularly bulls tend to have a higher protein requirement. This can be especially true in the early stages of the finishing period; we have products such as our **Optigen Farm Protein Pack** to address this if needs be. When the PDI value of the diet is balanced and an adequate supply, the activity of the microbes in the rumen is increased

When this happens a lot more nutrients are available to be absorbed by the animal in the intestines and less feed passes out in the dung undigested. Low protein forages such as hay, straw, maize silage, or fodder beet can inhibit microbial activity unless they are supplemented with a correct PDI source.



Alternatively, if the PDI value of the diet is too high, the animal must use extra energy to excrete the surplus protein resulting in less energy being available to go towards weight gain.

When feeding our beef concentrates, you can be totally confident that careful consideration is given when formulating, to balance the PDI values to enhance the efficiency of rumen microbes. If you would like to talk to us about the balance of your beef animal's diet, please contact any of Grennan's technical team.

## UTILISING THIS YEAR'S RESULTS TO SET COWS UP FOR 2023!

By Aisling Claffey – (B. Agr. Sc., Ph.D.) – Ph: 086 0317483

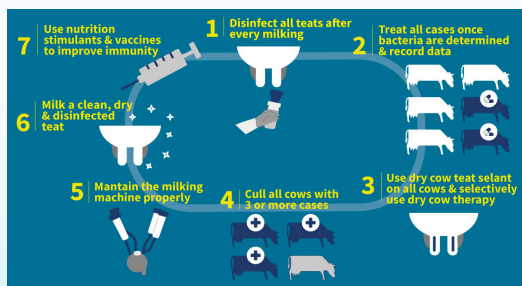
Preparation is now underway to set our herd up for the challenges associated with the transition period with final scans, body condition scoring and silage analysis all playing an important role in determining the duration of dry cow period each animal requires! But it is also a time when we should be reflecting on critical information built up throughout the year and putting together the final pieces of the puzzle to set cows up for next spring.

new infection in this lactation, the prevalence of sub-clinical mastitis and the success of Selective Dry Cow Therapy (SDCT) where used. Attention should also be paid to treatments recorded for mastitis throughout this lactation, but particularly mastitis infections in early lactation!

The final milk recording is also critical, within 30 days of beginning to dry off to get the most up-to-date indication of udder health. A bacterial culture and sensitivity analysis will identify the bacteria of note within your herd and the most appropriate antibiotic treatment for animals that require treatment.

SDCT should only be considered for animals who have had no record of clinical mastitis, no test over 200 in this lactation and are currently under 100 SCC. A California Milk Test (CMT) will ensure that no issues have developed since her final milk recording.

The Mastitis Control Plan has recently added two new steps to its protocols which include pre-dipping teats to help control the spread of environmental pathogens and a focus on improving immunity! At J Grennan & Sons, we have been working with Aromabiotic under our Immuno Range of products to successfully support and strengthen the Immune system during the transition and early lactation period. Talk to us today to see how you could go a step further to improving herd health in early lactation for 2023.



Utilise your Life Time Report which will summarise your SCC per cow for the last three milk recordings, along with the previous lactation SCC average. Cows on the red list will have been over 200 SCC for 2+ tests and attention should be paid to their SCC in the previous lactation also.

A milk recording of particular importance is the first one of the season, as this will highlight how effective dry cow treatment strategies were in curing or minimising

# N7 BILLBOARD REMINDS PUBLIC OF THE LACK OF JOINED UP THINKING BEHIND AGRICULTURAL EMISSION TARGETS

By Niall Grennan, Managing Director



Pictured left to right : Carol Nolan TD, Niall Grennan Managing Director of J. Grennan & Sons, Eoin Lyons Dairy Farmer and Paddy Casey, Fertiliser Specialist with J. Grennan & Sons, at the new climate change billboard at Kill on the N7

*We would like to thank Carol Nolan for her constant support to Irish farming.*

J Grennan and Sons have commissioned a billboard poster on the N7 motorway just outside Dublin. The poster is designed to point out to the non-farming public – in a very graphic way – just how important a role Irish agriculture can play in helping deliver future food security for a growing global population and the sad lack of foresight and joined up thinking behind the emissions reduction targets recently imposed on Irish Agriculture.

We decided to do this following the recent decision by the Irish government to set a 25% reduction target in greenhouse gas production levels within agriculture by 2030 and we have taken this step with the full support of many farmers, all of whom believe passionately in the future of Irish agriculture.

Ireland's temperate climate, fertile soils and skilled farmers makes it one of the most eco-efficient producers of food in the world. Dairy and Meat products are critical parts of the human food chain and consumer demand for them is only set to increase due to a growing global population.

***Attempting to tackle global warming by reducing food production here in Ireland does not make any sense. These latest emissions targets will inevitably lead to the EU outsourcing food production & shifting it to nations who have a higher carbon footprint per kilo of meat and dairy than us. This will ultimately lead to an increase in global warming rather than a decrease.***

Climate change is a global issue, so it will need global solutions that will only be arrived at with global scale thinking and global scale policies. Irish farmers fully understand that they must become more sustainable if they want to remain viable and want to work with government & policy makers in doing so. However, we need our leaders and policy makers at both national and EU level to be on the same page. Government must rapidly re-think its policies and promote, not demote, Irish agriculture if it wants to help in the global battle against climate change.

Over the next few weeks, we plan to commission a series of these billboards around the country and to use a range of other means at our disposal to highlight this issue to as wide an audience as possible.

This campaign is being funded to a large extent by the profits we earned from a fixed term, milk price hedging scheme we set up to highlight what we believe to be the inherent unfairness of the closed loop pricing schemes being promoted by some of Ireland's larger Coops. We did not set it up to make a profit and promised participants at the time, that if our milk price hedging scheme did show a profit we would use 100% of those profits to do something positive for Irish Agriculture. Hopefully this campaign will turn into that something positive.

RATH  
057 91 33002

KILCORMAC  
057 91 35004

TINNYCROSS  
057 93 25500

MOATE  
090 64 66526

ROSEMOUNT  
090 64 36358

MOYVORE  
044 93 55593